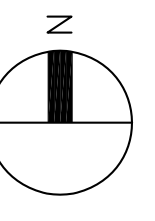
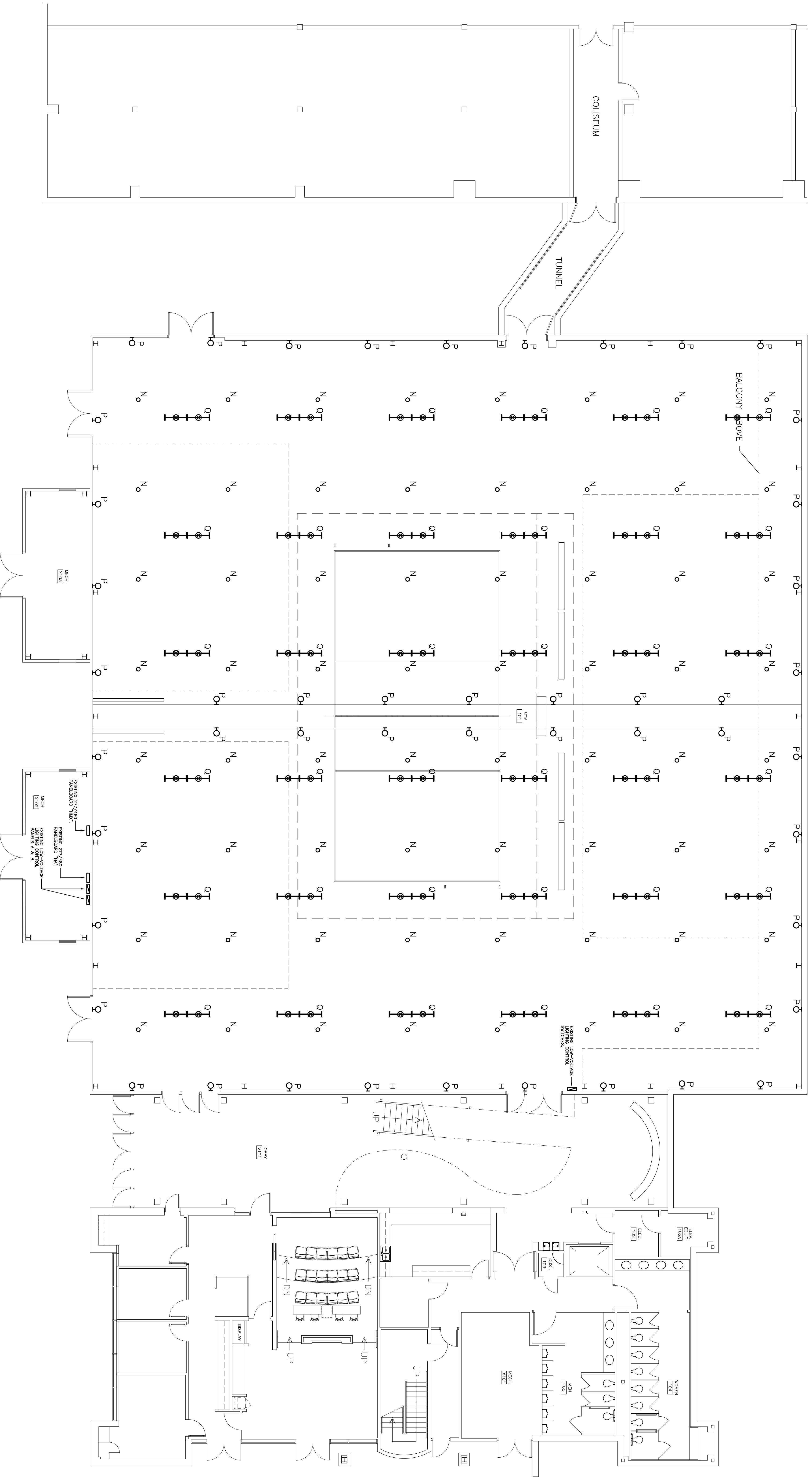


RE-LAMPING SCHEDULE FOR EXISTING LIGHTING FIXTURES							
SYMBOL	TYPE	DESCRIPTION	MANUFACTURER	MODEL NUMBER	MOUNTING	VOLTS	NEW LAMPS
o	N	EXISTING 400-WATT, METAL HALIDE, HIGH-BAY FIXTURE.	HOLDPHANE	CPPL-400W-27-00-835-WC27B-0821412	CEILING STRUCTURE	277	E1E LIGHTING #52533-A400SX/BI. 42,000 INITIAL LUMENS, 4100K
o	P	EXISTING 400-WATT, WALL-MOUNTED, INDIRECT, METAL HALIDE FIXTURE (SCOOP TYPE).	SPI	EP95603-ER-277Y	WALL MOUNTED	277	E1E LIGHTING #52531-A400SX/HOR. 39,000 INITIAL LUMENS, 4100K
o	Q	EXISTING 8' FLUORESCENT EMERGENCY LIGHTING FIXTURE.	LITHONIA	81-PW232-277-503-WG3-PCGP-TLW	CEILING STRUCTURE	277	SYLVANIA #E02/Z5W/841/7P/25/E003 4 LAMPS PER FIXTURE, 1182K

GENERAL NOTES

- REMOVE AND LEGALLY DISPOSE OF ALL FLUORESCENT AND HID LAMPS CURRENTLY INSTALLED IN EXISTING FIXTURES SHOWN ON PLAN.
- PROVIDE NEW LAMPS IN ALL EXISTING FIXTURES SHOWN ON THIS PLAN. PROVIDE LAMPS IN ACCORDANCE WITH THE RE-LAMPING SCHEDULE SHOWN ON THIS PLAN.
- CLEAN LENSES AND HOUSINGS OF ALL TYPE "N" AND TYPE "P" LIGHTING FIXTURES WHILE RE-LAMPING FIXTURES. USE A COMMERCIAL GRADE CLEANING SOLUTION AND SOFT COTTON TOWELS TO CLEAN LENSES AND HOUSINGS.
- FURNISH MAN-LIFTS AS NECESSARY TO REACH EXISTING LIGHTING FIXTURES FOR RE-LAMPING.
- ALL TYPE "N" AND TYPE "P" LIGHTING FIXTURES ARE SERVED FROM EXISTING PANEL "A" AND "B". "A" AND "B" CIRCUITS ARE ROUTED THROUGH LOW VOLTAGE LIGHTING PANELS "X" AND "Y".
- ALL TYPE "Q" FIXTURES ARE SERVED FROM EXISTING PANEL "M" AND CIRCUITS ARE BACKED FROM PANEL "TC" LOCATED IN THE ADJACENT CAROLINA COLISEUM EAST ELECTRICAL EQUIPMENT ROOM (NOT SHOWN).



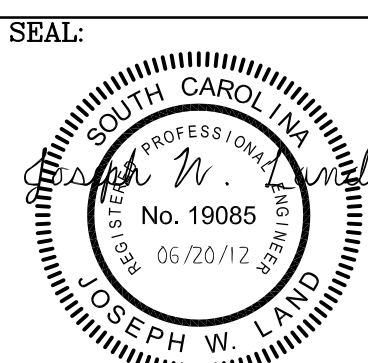
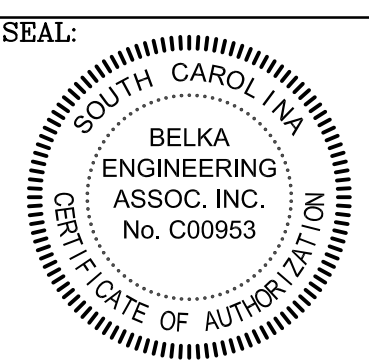
1

USC PRACTICE FACILITY LIGHTING PLAN

SCALE: 1/8" = 1'-0"

US21203 SHEET
BEA BELKA ENGINEERING ASSOCIATES, INC.
 7 QUINCY SQUARE, SUITE 201
 COLUMBIA, SOUTH CAROLINA 29210
 (803) 731-0650 fax (803) 731-2880
 EMAIL: jwland@belkainc.net

CAMPUS PLANNING AND CONSTRUCTION
 COLUMBIA, SC 29208



PROJECT TITLE:	USC ATHLETIC PRACTICE FACILITY LIGHT FIXTURE RE-LAMPING PROJECT	BUILDING:	084A	DRAWING:		DATE:	20JUNE12	DRAWN BY:	JJS	CHECKED BY:	JWL	SEAL:	
REV.						DESCRIPTION		DATE	ORIG. BY	DRAWN BY			



University of South Carolina

E 1

OP

SHEET IN SET:

OP